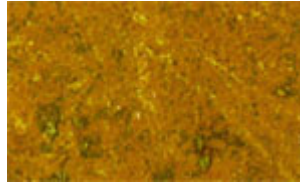


Degrees of Cleanliness of Blast-Cleaned Surfaces

Key



Steel where mill scale has started to flake and light rusting occurs.

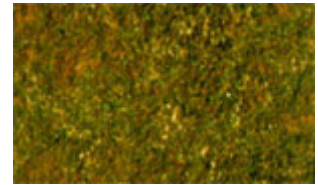
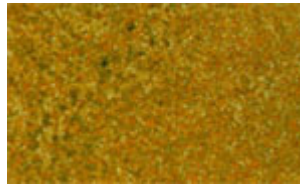
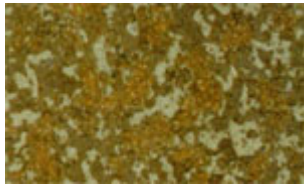


Steel where all mill scale has flaked off and complete rusting has taken place.



Steel where pitting and complete rusting has occurred.

Brush-off SA-1



Tightly adherent mill scale, rust and coatings may remain on the surface. Mill scale, rust and coatings are considered adherent if they cannot be removed with a dull putty knife.

Commercial SA-2



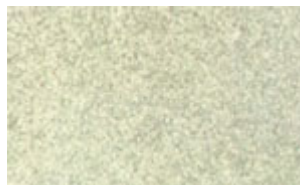
Evenly dispersed very light shadows, streaks and discolorations caused by stains of rust, mill scale or coatings may remain on no more than 33 percent of the surface. Slight residues of rust and coatings may be left, if the original surface is pitted.

Near - White Metal SA-2-1/2



Evenly dispersed very light shadows, streaks and discolorations caused by stains of rust, mill scale or coatings may remain on no more than 5 percent of the surface.

White Metal SA-3



Free of all visible oil, grease, dirt, dust, mill scale, rust and coatings.